

Big League Productions, Inc.

PRESENTS

the
cher
show
a new musical

BOOK BY

RICK ELICE

STARRING

CATHERINE ARIALE ELLA PEREZ MORGAN SCOTT

AND

MIKE BINDEMAN TYLER PIRRUNG LORENZO PUGLIESE LUCY WERNER

WITH

EMMA ALTERI MICHELLE AROTSKY NEFTALI BENITEZ
CHARLES BLAHA GARY PAUL BOWMAN EMMA JADE BRANSON
KEVIN MICHAEL BUCKLEY SAMANTHA BUTTS LIZ DAVIS ALLORIA FRAYSER
JORDAN GOLD NATHAN HOTY TRE KANALEY DREW LAKE
MASON DERRECK LEWIS GRACE NAPOLETANO

SET DESIGN

KELLY JAMES TIGHE

LIGHTING DESIGN

CHARLIE MORRISON

SOUND DESIGN

DANIEL LUNDBERG

VIDEO DESIGN

JONATHAN INFANTE
KELLY JAMES TIGHE

WIG DESIGN

ROXANNE DE LUNA

COSTUME COORDINATOR

JANINE LOESCH

CASTING DIRECTOR

ALISON FRANCK, C.S.A.

TECHNICAL SUPERVISOR

JAMES BOOK

MUSIC SUPERVISOR

KRISTIN STOWELL

MUSICAL DIRECTOR

EDDIE CARNEY

VOCAL, SONG, & INCIDENTAL
MUSIC ARRANGEMENTS

DARYL WATERS

DANCE MUSIC ARRANGEMENTS

ZANE MARK AND DARYL WATERS

TOUR PRESS & MARKETING

TRUE MARKETING
WENDY J. CONNOR

PRODUCTION STAGE MANAGER

OWEN O' BRIEN

COMPANY MANAGER

SOPHIE WHITFIELD

GENERAL MANAGEMENT

BIG LEAGUE PRODUCTIONS
ZACH KROHN

ORIGINAL BROADWAY AND TOUR COSTUME DESIGN BY
BOB MACKIE

EXECUTIVE PRODUCER

DANIEL SHER

CHOREOGRAPHY BY

ANTOINETTE DIPIETROPOLO

DIRECTION BY

CASEY HUSHION

TOUR BOOKING BY TRACEY MCFARLAND, BROADWAY & BEYOND THEATRICALS

ORIGINAL BROADWAY PRODUCTION PRODUCED BY FLODY SUAREZ, JEFFERY SELLER AND CHER
COSTUMES, WIGS, AND PROPS ARE LEASED THROUGH THE COURTESY OF OGUNQUIT PLAYHOUSE, OGUNQUIT, MAINE

THE CHER SHOW IS PRESENTED THROUGH SPECIAL ARRANGEMENT WITH BROADWAY LICENSING GLOBAL,
440 PARK AVENUE SOUTH, 11TH FLOOR, NEW YORK, NY 10016, WWW.BROADWAYLICENSING.COM.

MUSICAL NUMBERS

ACT ONE

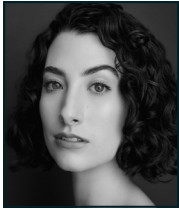
If I Could Turn Back Time (Part 1)	Star, Ensemble
If I Could Turn Back Time (Part 2)	Star, Babe, Lady
Half Breed	Georgia, Babe
A Dream Is A Wish Your Heart Makes	Babe, Star
You Better Sit Down Kid	Georgia
Half Breed (Concert Version)	Babe, Star, Lady
Da Doo Ron Ron	Babe, Lady, Star, Gracia, Fanita, Ensemble
Be My Baby	Babe, Gracia, Fanita
The Shoop Shoop Song	Babe, Bridget, Colleen, Star, Lady, Girl Group
I Like It Like That	Dave Clark Five
I Got You Babe	Babe, Sonny
Little Man	Sonny
When The Money's Gone	Babe, Sonny, Lady, Ensemble
Vamp	Star
Ain't Nobody's Business	Bob Mackie, Lady, Babe, Star, Ensemble
Bang Bang (My Baby Shot Me Down)	Lady
Living In A House Divided	Star, Babe, Lady, Sonny
Bang Bang (Reprise)	Lady, Star, Ensemble
Believe (Ballad)	Star, Babe, Lady
Song For The Lonely	Star, Lady, Babe

INTERMISSION

ACT TWO

All I Ever Need Is You	Sonny, Lady
Heart Of Stone	Lucille Ball, Lady
Gypsies, Tramps and Thieves	Star
Midnight Rider/Ramblin' Man	Gregg
Just Like Jesse James	Star, Gregg, Ensemble
Dark Lady	Sonny, Gregg, Ensemble
Baby, Don't Go	Sonny
Strong Enough	Lady, Star
When The Money's Gone (Part 2)	Star
The Way Of Love	Star
The Beat Goes On/It Don't Come Easy	Babe, Mackie, Assistant, Ensemble, Star
I Found Someone (Part 1)	Star
I Found Someone (Part 2)	Star, Rob
I Found Someone (Part 3)	Star
I Got You Babe (Reprise)	Sonny, Star
You Haven't Seen The Last Of Me	Star, Lady, Babe
A Dream Is A Wish (Reprise)	Babe, Star, Georgia
Finale	Star, Babe, Lady, Ensemble
Take Me Home - Bows	Company

WARNING: The photographing or sound recording of any performance is strictly prohibited.



Catherine Ariale



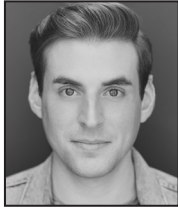
Ella Perez



Morgan Scott



Mike Bindeman



Tyler Pirrung



Lorenzo Pugliese



Lucy Werner



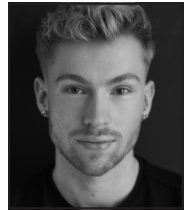
Emma Alteri



Michelle Arotzky



Neftali Benitez



Charles Blaha



Gary Paul Bowman



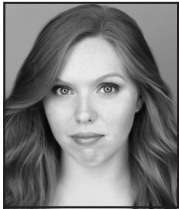
Emma Jade Branson



Kevin Michael Buckley



Samantha Butts



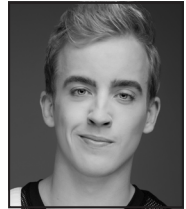
Liz Davis



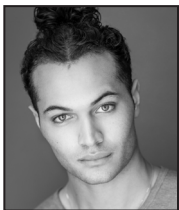
Alloria Frayser



Jordan Gold



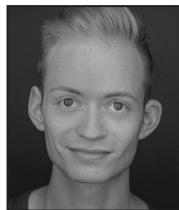
Nathan Hoty



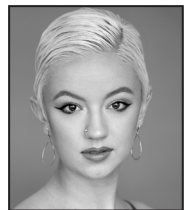
Tre Kanaley



Drew Lake



Mason Derreck Lewis



Grace Napoletano

CAST

Star	MORGAN SCOTT
Lady	CATHERINE ARIALE
Babe	ELLA PEREZ
Sonny Bono	LORENZO PUGLIESE
Georgia Holt/Lucille Ball	LUCY WERNER
Bob Mackie/Robert Altman/Frank	TYLER PIRRUNG
Gregg Allman/John Southall	MIKE BINDEMAN
Rob Camilletti	GARY PAUL BOWMAN
Lee/Top of the Pops Host	MASON DERRECK LEWIS
Bridget	EMMA ALTERI
Colleen	GRACE NAPOLETANO
Phil Spector/Sid the Censor/Male ET Reporter	KEVIN MICHAEL BUCKLEY
Infomercial Director/Digby the Writer	CHARLES BLAHA
Studio Singers	ALLORIA FRAYSER, DREW LAKE
Girl Group	MICHELLE AROTSKY, JORDAN GOLD, DREW LAKE
Dave Clark Five	NEFTALI BENITEZ, CHARLES BLAHA, GARY PAUL BOWMAN, KEVIN MICHAEL BUCKLEY, TRE KANALEY
Steve the Scribe	TRE KANALEY
Bob Mackie's Assistant	NEFTALI BENITEZ
Dark Lady	EMMA JADE BRANSON
Female ET Reporter	MICHELLE AROTSKY
Ensemble	EMMA ALTERI, MICHELLE AROTSKY, NEFTALI BENITEZ, CHARLES BLAHA, GARY PAUL BOWMAN, EMMA JADE BRANSON, KEVIN MICHAEL BUCKLEY, SAMANTHA BUTTS, ALLORIA FRAYSER, JORDAN GOLD, TRE KANALEY, DREW LAKE, MASON DERRECK LEWIS, GRACE NAPOLETANO

THERE WILL BE ONE 15-MINUTE INTERMISSION.

UNDERSTUDIES

For Star—JORDAN GOLD, LUCY WERNER; for Lady—JORDAN GOLD, DREW LAKE; for Babe—EMMA ALTERI, GRACE NAPOLETANO; for Sonny Bono—GARY PAUL BOWMAN, KEVIN MICHAEL BUCKLEY; for Georgia Holt/Lucille Ball—LIZ DAVIS, JORDAN GOLD; for Bob Mackie/Robert Altman/Frank—NATHAN HOTY, MASON DERRECK LEWIS; for Gregg Allman/John Southall—GARY PAUL BOWMAN, TRE KANALEY; for Rob Camilletti—CHARLES BLAHA, TRE KANALEY; for Dark Lady—MICHELLE AROTSKY.

SWINGS

LIZ DAVIS, NATHAN HOTY

Dance Captain: MICHELLE AROTSKY
Assistant Dance Captain: NATHAN HOTY

ORCHESTRA

Conductor/Keyboard 1: EDDIE CARNEY
Assistant Conductor/Keyboard 2: ISABELLA MESENBRINK
Drums—MARC MCDUFF; Bass—LINDSAY ROSENBERG; Guitar 1—TONIE NGUYEN;
Guitar 2—WILL MURPHY; Trumpet—NICK BRUNO; Reeds—HENRY HERNANDEZ;
Trombone—ERIC SPENCER.

WHO'S WHO IN THE CAST

CATHERINE ARIALE (*Lady*) She/Her. Catherine is over the moon to be making her national tour debut with *The Cher Show!* Credits: *The Waiting* (Margot), *Sunday in the Park with George* (Yvonne), *Memphis* (Gladys). Pace MT. All my love to Mom, Dad, Austin, and Jill.

ELLA PEREZ (*Babe*) is beyond excited to be going on her first tour with *The Cher Show!* She recently earned her BFA in Musical Theatre from SUNY Cortland this past May. Recent credits include *Proof* (Catherine), *Cabaret* (Emcee), and *Company* (Amy). Endless love to her family and friends for supporting and believing in her- she would not have the guts to be here without you. Thank you to the entire cast and creative team for making this possible, and thank you to Cher for being Cher.

MORGAN SCOTT (*Star*) is both thrilled and humbled to embody the icon that is CHER. Favorite credits: Doctor (*Next to Normal*), Baker's Wife (*Into the Woods*), Gina (*RE-WIND*); along with bandleading and audiobook narration. Her cup runneth over with gratitude for her family, friends, Nick, Uisge and BBB. @mscott3

MIKE BINDEMAN (*Gregg Allman/John Southall*) National Tour Debut! Regional: *The Lightning Thief* (Playhouse Square), *The Rocky Horror Show* (Bucks County Playhouse), *Grease* (Argyle Theatre), *Ghost* (Beck Center for the Arts), *Mamma Mia*, *Something Rotten*, *Kinky Boots* (Forestburgh Playhouse), among others. BWMT '23. Rep: HCKR. IG: @mike_bindeman

TYLER PIRRUNG (*Bob Mackie/Robert Altman/Frank*) is ecstatic to be making his national tour debut! Some favorite credits: *Elf* (Buddy - Arizona Broadway Theatre), *Jersey Boys* (Bob Gaudio - Little Theatre on the Square), *Spamalot* (Historian - City Springs Theatre Co.), *Cabaret* (Emcee - Glow Lyric Theatre). Much love to his friends and family for their endless support and to Jim and the MTA fam! IG: @tylerpirrung

LORENZO PUGLIESE (*Sonny Bono*) is pumped to be on tour again! Prior credits include the first national tour of *The SpongeBob Musical* (SpongeBob SquarePants). As a 5'5 Italian man

himself, he finds it fairly easy to pretend to be one on stage. Massive thanks to family and friends. IG: lorenzo_m_pugliese

LUCY WERNER (*Georgia Holt/Lucille Ball, u/s Star*) is a singer, songwriter, and performing artist dwelling in Brooklyn. After graduating from Elon University she traveled all over the US and Asia with the First National Tour of *Annie* as Lily St. Regis. She has since spent her time performing her self produced solo shows all over the world on various cruise lines. Listen to her original music on all streaming platforms under her name, as well as a brand new cover of 'I Got You Babe' with her band The Astroband! She is so grateful for her most loving and supportive family and coolest boyfriend - you are the Hunny to my Lu! I love you guys. @theastroband @lucyanthesky

EMMA ALTERI (*Ensemble, Bridget, u/s Babe*) National tour debut! Regional: *Bright Star* (Margo), *The Great American Trailer Park Musical* (Pickles), *Saturday Night Fever* (Stephanie u/s), *Escape to Margaritaville*. Love and gratitude to the fam & the team. BA: Wagner College. emmaalteri.com / @emmaalteri

MICHELLE AROTSKY (*Ensemble, Girl Group, Female ET Reporter, u/s Dark Lady, Dance Captain*) is thrilled to be making her National Tour debut in *The Cher Show*. Select credits include: *Guys and Dolls* (ACT of Connecticut), *Rock of Ages* (ACCC), Matilda (The Engeman Theatre), *Newsies* (The LEX), and *Elf: The Musical* (Syracuse Stage). BFA Syracuse University. Endless love and gratitude to my family and friends! IG: @michelle_arotsky

NEFTALI BENITEZ (*Ensemble, Dave Clark Five, Bob Mackie's Assistant*) (he/him) is incredibly honored to be making his Broadway Nat'l tour debut!! Other credits include: *We'll Meet Again* (Tour), *AIDAmAr* (Cruise), *Guys and Dolls* (Regional) and *Grumpy Old Men* (Regional). He thanks his family and friends profusely for their continued support! | <http://www.neftalibenitez.com> // Insta: @neffyybear

CHARLES BLAHA (*Ensemble, Infomercial Director/Digby the Writer, Dave Clark*

WHO'S WHO IN THE CAST

Five, u/s Rob Camilletti) is proud to be making his national tour debut. Charles recently graduated from Marymount Manhattan College with a BFA in MT. Credits include *Cabaret* (Hans - Virginia Theatre Festival), *Pippin* (ensemble), *Carrie* (ensemble). Sending love to my family and friends back in New York
IG: @charles.blaha <3

GARY PAUL BOWMAN (*Ensemble, Rob Camilletti, Dave Clark Five, u/s Gregg Allman/John Southall, u/s Sonny Bono*) is elated to be a part of his 2nd national tour after wrapping up his debut in *Madagascar the Musical* (First National - Alex the Lion). REGIONAL: John W. Engeman Theater (*Kinky Boots, Rock of Ages*). The Media Theater (*Aspects of Love, RENT*). TV: Oxygen, Travel Channel, ID Network. Love and thanks to CPM Talent Management, my family, the fellas, and Casey.
IG: @gary_bowman

EMMA JADE BRANSON (*Ensemble, Dark Lady*) National Tour Debut! Proud Eastern Washington native and alumnus of Boston Conservatory at Berklee. Emma toured domestically and internationally with Complexions Contemporary Ballet. Thank you to the entire casting team for this opportunity! All my love and thanks to Mom, Dad, and Luke for their endless support. Kisses to Rafa and Rosie!
IG: @emmabranson

KEVIN MICHAEL BUCKLEY (*Ensemble, Phil Spector/Sid the Censor/Male ET Reporter, Dave Clark Five, u/s Sonny Bono*) is thrilled to be making his national tour debut. In addition to acting, he writes/produces his own pop music as 'Kev!' on all streaming platforms. Some credits include: *The Cher Show* (Gateway Playhouse), *Guys & Dolls* (Theatre Aspen), & *The Wizard of Oz* (Vital Theatre). Thank you to my family, friends, teachers, and agents at UIA. Congratulations to the entire cast, crew, and creative team.

SAMANTHA BUTTS (*Ensemble*) is thrilled to be making her national tour debut. Credits: *Radio City Christmas Spectacular* (Rockette), *Destiny Of Desire* (Assistant Choreographer - The Old Globe Theater), *Women On Fire* (Ensemble - Royal Family Productions) Love to her amazing parents Wendy and Erik!

LIZ DAVIS (*Swing, u/s Georgia Holt/Lucille Ball*) is thrilled to be joining her first national tour! Regional credits include: *The Prom* (WPPAC), *White Christmas* (NBFT) *Jersey Boys* (SSMT). BA, SUNY Cortland. Endless love to my friends and family! inhale confidence, exhale doubt.
IG@lizzdavviss

ALLORIA FRAYSER (*Ensemble, Studio Singer,*) is unbelievably honored to be making her national tour debut with *The Cher Show!* Recent credits include *The Color Purple* (Nettie), *White Christmas* (Rita), and *Beautiful the Carole King Musical* (Shirelle). Her love and gratitude goes to her family, friends, reps at The Price Group, and her cat, Lucy. CCM MT c/o 23 Eccl. 3:12. alloriafrayser.com <3

JORDAN GOLD (*Ensemble, Girl Group, u/s Georgia Holt/Lucille Ball, u/s Star, u/s Lady*) National tour debut! Thank you to Mom and Dad, family, friends, and mentors for your unwavering support and love. Credits: *Rent* (Maureen Johnson), *All Shook Up* (Miss Sandra). All my love to my alma mater, Montclair State University (BFA Musical Theatre). Proudly represented by The Collective Talent Agency. @jordan.gold
www.jordangold.me

NATHAN HOTY (*Swing, u/s Bob Mackie/Robert Altman/Frank, Assistant Dance Captain*) (They/Them) is overjoyed to make their Broadway National Tour debut! Credits: *Waiting in the Wings* (Off-Broadway), *We'll Meet Again* (Tour), worked with Jimmy Buffett (Cruise) and *Train* (Rock and Roll Hall of Fame). Thank you to their fam at Bloc, their Parents and Grandma!
TikTok/Insta: @nathanhoty

TRE KANALEY (*Ensemble, Dave Clark Five, Steve the Scribe, u/s Rob Camilletti, u/s Gregg Allman/John Southall*) is excited to make his National Tour debut. Credits: *Annie Get Your Gun* (Tommy - Jackson Hole Playhouse), *Elf the musical* (Ensemble - Argyle Theatre), *Bring it On!* (Cameron - SSA). He would like to thank his Mom and Dad, All family, Thomas, Kaelin, Brett, Corinne, and Mrs. P! IG- kanaley_22

DREW LAKE (*Ensemble, Studio Singer, Girl Group, u/s Lady*) is super grateful to be turning back time with you! Selected credits: *Bat Out of Hell* (Las Vegas Residency- Dance Cap-

WHO'S WHO IN THE CAST

tain), *Roxstar* (@roxstarvegasa), *Newsies* (Hannah, U/S Katherine), Tuacahn Amphitheater Broadway Season, *Something Rotten!* (Regional Premiere- MT West, 5 Star Theatricals). Love to my 3 M's & Nonnie always. "Just do it!" drewhaleylake.com @idrewalake

MASON DERRECK LEWIS (*Ensemble, Lee/ Top of the Pops Host, u/s Bob Mackie/Robert Altman/Frank*) is stoked to be on the road with Cher! Credits: *Pippin* (National Tour - Manson Trio, Pippin & Lewis u/s), *Mary Poppins* (City Springs Theater), singer/dancer with Norwegian Creative Studios. Endless love to Stephen and Tucker! Rep: MTA @masondlewis

GRACE NAPOLETANO (*Ensemble, Colleen, u/s Babe*) is over the moon to be making her National Tour debut! She is a recent graduate of the University of Northern Colorado (BFA in Musical Theatre, May 2023). Credits include: *RENT* (Maureen Johnson, UNCO), *Head Over Heels* (Mopsa, TheatreSilco), *The Laramie Project* (Barbara Pitts, UNCO). @gracenaipoletano, gracenaipoletano.com

RICK ELICE (*Book*) Jersey Boys, Rick's first Broadway credit, co-authored with Marshall Brickman, won the Tony Award, the Grammy Award and the Olivier Award for Best Musical, and is in the record books as the twelfth longest-running show in Broadway history. With Marshall Brickman and Andrew Lippa, he wrote *The Addams Family*, starring Nathan Lane and Bebe Neuwirth. For the past five years, *The Addams Family* has been the number one or number two most licensed musical in North America. His first play, *Peter and the Starcatcher*, directed by Roger Rees and Alex Timbers, received more Tony Award nominations than any American play in Broadway history, and won five 2012 Tony Awards. For the past six years, the play has consistently been in the top five most produced plays in North America. Rick also wrote the double Tony Award-winning *The Cher Show* for Broadway, directed by Jason Moore; the world premiere at Paper Mill Playhouse of a new musical, *My Very Own British Invasion*, directed by Jerry Mitchell; the world premiere at The Old Globe of a new musical, *Dog and Pony*, with music and lyrics by Michael Patrick Walker; and the world premiere of a new musical, *Turn of*

the Century, co-authored with Marshall Brickman, directed by Tommy Tune. Current projects include *The Princess Bride* for Disney, and *Smash* for Robert Greenblatt, Neil Meron, and Steven Spielberg with Bob Martin; *Monopoly*, for Hasbro, with David Rossmer and Dan Lipton; and *Mad Season*, with Rob Thomas, Matt Serletic and Matt Walden of Matchbox Twenty, directed by Schele Williams. Rick is also adapting Sara Gruen's popular novel *Water for Elephants* for the stage with the acclaimed theater collective, *Pig Pen*, directed by Jessica Stone; and writing an entirely original musical (!) based on the rivalry between Darwin and Roget, love, death, madness and the creation of Roget's Thesaurus, with 2021 Ed Kleban Award winner, Benjamin Scheuer. Rick's book, *Finding Roger, An Improbably Theatrical Love Story*, a tribute to his late husband, Roger Rees, is published by Kingswell.

CASEY HUSHION (*Direction*) Broadway: Associate/Resident Director of *Mean Girls, Aladdin, The Prom, In The Heights, Elf, The Drowsy Chaperone, To Be Or Not to Be and Good Vibrations*. Other New York credits include *Call Me Madam* (Encores) and *Fat Camp*. Upcoming projects: National Tour of the new hit play *Clue*, which premiered at Cleveland Playhouse and *Mystic Pizza*, slated to launch a tour out of La Mirada Theatre. Also upcoming, *Beautiful* at Paper Mill Playhouse, where she has also directed *Murder On The Orient Express, A Jolly Holiday and Beehive*. Casey has directed regionally at George Street Playhouse, Goodspeed Opera House, Walnut Street Theatre, Riverside Theatre, Philadelphia Theatre Company and many more. Artistic Director of North Carolina Theatre for ten years. Television: *Unbreakable Kimmy Schmidt, The Tonight Show, Good Morning America, The View, The Late Show with Stephen Colbert, NBC Special One Night Only: The Best of Broadway*. Love to Marc and her three kids, Lincoln, Violet and Jane. www.caseyhushion.com

ANTOINETTE DIPIETROPOLO (*Choreography*) Officially the first choreographer in the country of Saudi Arabia. Choreographer, *Fame* US Tour; *Annie, Munny, Candide*, star-

WHO'S WHO IN THE CAST

ring George Hearn, Rita Moreno, San Francisco Opera; *Big Apple Circus* In NYC; As Director/Choreographer *Ragtime*, Lyric Stage (nominated in 14 categories for the Theatre League Awards); *Ragtime*, North Carolina Theatre, (Winner Best Choreographer, Triangle Theatre Award); *Legally Blonde*, *Mamma Mia*, *Hairspray*, Argyle Theater; *Jersey Boys* WPPAC; Director, US Tour MasterChef Live; International Tour of *Got Talent Live* www.AntoinetteDiPietropolo.com follow me @antoinettedip

KELLY JAMES TIGHE (*Set Design and Co-Video Design*) Off-Broadway/national tours: *Martin Luther on Trial*, *Shadowlands*, *The Most Reluctant Convert*, *The Great Divorce*, *The Fantasticks*, *Almost Heaven*, *Movin' Out*, *Shear Madness*, *Cats*... Regional: Disney Theatrical, Paper Mill Playhouse, San Jose Repertory Theatre, Laguna Playhouse, Center REpertory Company, SlowBurn Theater, Arts Center of Coastal Carolina, TUTS, Gateway Playhouse, Broadway By the Bay, Contra Costa Musical Theatre, Ray of Light Theatre. Kelly's theatrical work is published in the textbook *Scene Design and Stage Lighting* and his work as an illustrator has been published in *Mooseltoe*, *A Moose and a Dream*. Awards/recognition: SF Bay Area Theatre Critics Circle, Drama-Logue, and Shellie Awards. IG: [kellyjtighe](http://kellyjtighe.com) web: kjtdesign.com

BOB MACKIE (*Original Broadway and Tour Costume Design*) Costume and fashion designer Bob Mackie is a nine-time Emmy Award winner, Geoffrey Beene CFDA Lifetime Achievement Award recipient, and has three Oscar nominations. Most recently he received a 2019 Tony Award, Drama Desk Award, and Outer Critics Circle Award for his work on *The Cher Show*. His Broadway credits include *Moon Over Buffalo* and *Putting It Together*, starring Carol Burnett, *Best Little Whorehouse Goes Public*, *Minelli on Minelli*, *Lorelei* with Carol Channing, and *On the Town* with Bernadette Peters and Phyllis Newman. Broadway on television: "Once Upon a Mattress" starring Carol Burnett, "Gypsy" starring Bette Midler, "Carousel," "Brigadoon," "Of Thee I Sing," and "Kismet." His inventive and memorable designs have

helped raise entertainers like Tina Turner, Diana Ross, Cher, Elton John, Ann-Margret, Bernadette Peters, Mitzi Gaynor, Carol Burnett, Bette Midler, Pink, and Cher to iconic status both on-screen and off.

CHARLIE MORRISON (*Lighting Design*) NYC/National/International tours: *Disney's The Little Mermaid*, *A Christmas Story*, *How the Grinch Stole Christmas! The Musical*, *A Chorus Line*, *Chitty Chitty Bang Bang*, *Miss Saigon*, *Disney's Aida*, *The Producers*, *Man of La Mancha*, *Guys and Dolls*, *Groovalloo*, *Hello, Dolly!*, *My Fair Lady*, *The King and I*, *Spelling Bee*, *Gypsy*, *42nd Street*, *Smoke Joe's Cafe*, *The Who's Tommy*, *Titanic*, *The Music Man* and many others. Regional: Paper Mill Playhouse, Guthrie Theater, Shakespeare Theatre Company, Goodspeed Musicals, Seattle Repertory, Seattle 5th Avenue, Broadway Sacramento, Theatre Under the Stars, Dallas Summer Musicals, Kansas City Starlight, Pittsburgh CLO, George Street Playhouse, North Carolina Theatre, PlayMakers Repertory, Tulsa Opera and many others. TV: Finding Magic Mike for HBOMax. Charlie is the recipient of two Helen Hayes Awards for Outstanding Lighting Design. www.cmlighting.com

DANIEL LUNDBERG (*Sound Design*) Daniel has designed for Roundabout Theatre Company, The Public Theater, New York Stage and Film, The REV, A Contemporary Theatre of Connecticut, *His Story* (Dallas), and *Daniel Tiger's Neighborhood Live* (Tour). Sound engineer and assistant design credits include 15 Broadway productions, 11 tours, six circuses, two theme parks, and many concerts. BFA Carnegie Mellon. It's great to be here!

JONATHAN INFANTE (*Video Design*) Jonathan Infante is a multi-media designer and artist based out of Southern California. Owner of Infante Media, a boutique production company, that has developed video content for television, film, museums, concert tours, plays, and musicals around the world. He thanks his family and friends for their continued support. Most recent credits: *Disney's Tarzan the Musical* (Moonlight) *The Revolutionist*, *Legally Blonde 2022/23* US National Tour, *An American in Paris / South Pacific 2022* Tour, and *Dreamgirls 2020* Asia

WHO'S WHO IN THE CAST

Tour. Regional Credits: *Shrek* (3D-T), *Matilda* (Tuachan), *Prince Of Egypt* (Tuacahn), *Beauty and the Beast* (MRE), *Newsies* (Moonlight), *Big Fish* (Moonlight), *Mary Poppins* (MRE), *Damn Yankees* (Sacramento Music Circus) *American Idiot* (LMT).

KRISTIN STOWELL (*Music Supervisor*) is a music director, pianist, composer, arranger, copyist, and educator based in Washington, D.C. Recent credits include music directing the world premieres of *On Cedar Street* (Berkshire Theatre Group) and *Mystic Pizza* (Ogunquit Playhouse), and the regional premiere of *The Cher Show* (Ogunquit Playhouse). Her original award-winning musical *Endometriosis: The Musical* was featured in the 2022 Minnesota Fringe Festival. Kristin currently serves on the musical theatre faculty at American University.

EDDIE CARNEY (*Music Direction*) Beginning his career at the age of fourteen, Eddie's credits span the musical theatre gamut from *Show Boat* to *Chicago* to *Shrek the Musical*. Tours: *Legally Blonde* (MD '22-'23/AMD 2019), *A Chorus Line* (AMD - Tokyo 2022), *South Pacific* (MD), *An American in Paris* (MD), Dr. Seuss' *How the Grinch Stole Christmas! the Musical* (AMD). Other: *Mamma Mia!*, *Caroline or Change*, *Hairspray*, Disney's *The Little Mermaid*, *Urinetown*, *Ragtime*, *La Cage aux Folles*. Kennedy Center/ American College Theatre Festival Excellence in Music Direction: *Sunday in the Park with George* and Richard Taylor's *Whistle Down the Wind*. Accompanied platinum-recording artist Josh Groban and Tony Award-winner Daisy Eagan in NYC. Outside of the pit Eddie is a Britney Spears aficionado, drops his jaw watching Real Housewives, and predicts RuPaul's Drag Race winners with his fiancé. Dedicated to Preston, Mom, and Dad. "Art, in itself, is an attempt to bring order out of chaos." - Stephen Sondheim

ROXANNE DE LUNA (*Wig Design*) Debut design with Big League. North Carolina Theater: *Beautiful*, *The Carole King Musical*, *Kinky Boots*. Ogunquit Playhouse: *Tootsie*, *The New Broadway Musical*, *Da Vinci Code*, *Singing In The Rain*, *Beautiful*, *The Carole King Musical*, *Mr. Hollands Opus The New Musical* (World Premiere), *The Nutty Professor*, *The Cher Show*, *Young Frankenstein*, *Mystic Pizza* (World Pre-

miere), *Escape to Margaritaville*, *Annie the Musical*, *Kinky Boots*, *Menopause*, *Cabaret*, *42nd Street*, *Elf the Musical*. Cleveland Playhouse: *Light It UP!*. Playmakers Repertory Company LORT-D: *My Fair Lady*, *Intimate Apparel*.

ALISON FRANCK, C.S.A. (*Casting Director*) has been a casting director in NYC for over 25 years. She started as an assistant for many Broadway Productions, then she worked in film/TV for several years, then from 2000-2010, she was the Resident Casting Director at Paper Mill Playhouse. In 2011 she joined the team at Liz Lewis Casting Partners, where she cast commercials, voiceovers, film/TV, and theatre. Alison now runs her own company, Franck Casting, where she has cast several tours of well-known musicals including *Legally Blonde*, *Dreamgirls*, *An American in Paris*, *A Christmas Story: The Musical*, *A Chorus Line*, *The Simon and Garfunkel Story Live* and *Little Women, the Musical*, now on tour. www.franckcasting.com

JANINE LOESCH (*Costume Coordinator*) is a New York based Costume Designer and Coordinator. Janine is happy to be involved in her first Big League Tour. Previously her designs have been seen at The Gateway on Long Island. Her favorites include *As You Like It*, *Evita*, *Summer: The Donna Summer Musical* and *Jersey Boys*. Janine was a Wardrobe Supervisor on the World Premiere Off-Broadway Production of *The Last Supper*, the Original Off-Broadway Production of *Americano*, and the Off-Broadway Production of *Fiddler on the Roof: In Yiddish* with English Supertitles. This is the second time Janine has been involved in a production of *The Cher Show*, and is happy to be working with an amazing team! Special thanks to Casey, Dan, and her family and friends for their love and support!

OWEN O'BRIEN (*Production Stage Manager*) Off-Broadway PSM: *That Golden Girls Show!* (Rockefeller Productions) National Tour PSM: *Legally Blonde The Musical* (Big League Productions), *That Golden Girls Show!* (Rockefeller Productions), *Spamilton! An American Parody* (Briarpatch Theatricals). Regional PSM: *Kinky Boots*, *Footloose* (Theatre by The Sea). Select regional credits: *Disney's Newsies*, *Chicago*, *Joseph and the Amazing Technicolor Dreamcoat*, *Singin' in the Rain*, *Ain't Misbehavin'*.

WHO'S WHO IN THE CAST

WENDY J. CONNOR/DONNA FIEGEL (*Tour Press & Marketing*) TRUE Marketing is a full-service entertainment marketing firm based in Orlando, Florida that boasts a full Marketing and Public Relations Consulting Team, Graphic Design Department, and Social Marketing Strategy Team. Team TRUE has worked on national tours of *A Christmas Story – The Musical*, *An American In Paris*, *Legally Blonde*, *A Chorus Line*, *My Fair Lady*, *Spring Awakening*, *The Producers*, *42nd Street*, *Dreamgirls*, *South Pacific*, *Guys and Dolls*, and *The Wizard of Oz*. www.TeamTRUE.com

BROADWAY LICENSING GLOBAL and its family of imprints (Broadway Licensing, Dramatists Play Service, Playscripts, and Stage-works) is the global leader in theatrical licensing and distribution. The iconic works represented epitomize the greatest collection of authors, composers, lyricists, and underlying rights holders across the globe including Arthur Miller, Tennessee Williams, Lynn Nottage, Alan Menken, Stephen King, the Bee Gees, The Beatles, and Harry Potter Theatrical Productions. The Broadway Licensing Global collection of titles represents an astonishing 40 Tony Award® and 49 Pulitzer Prize-winning works. The company leverages its team's expertise in licensing, theatrical production, theatre education, and content creation to diversify, strengthen, and rapidly expand its portfolio into new sectors and markets. Founded in 2017, Broadway Licensing has quickly scaled and, as of 2022, the company represents 8 of the Top 10 most produced plays in professional theatres and 9 of the Top 10 most produced plays in High Schools.

BROADWAY & BEYOND THEATRICALS (*Tour Booking*) Led by founders and industry veterans Tracey McFarland, Victoria Lang, and Ryan Bogner, Broadway & Beyond Theatricals (BBT) is dedicated to the distribution and creation of quality branded theatrical content for traditional and non-traditional venues throughout North America and beyond. BBT's booking division delivers quality productions tailored to a venue's size and budget; the Content division offers commercial producers and IP stakeholders strategic management, consulting services and distribution solutions while producing quality

theatrical content in New York and for the road. On Broadway as Producer: *The Cottage*, *The Kite Runner*. Broadway tours as agent: *The Cher Show*, *The Kite Runner*, *The Addams Family Musical*, *An American In Paris*, *Legally Blonde*, *Million Dollar Quartet Christmas* & and more. www.bbtheatricals.com

BIG LEAGUE PRODUCTIONS/DANIEL SHER (*Executive Producer and General Management*) is celebrating its 30th season of producing and general managing Broadway tours of shows and attractions throughout the world. Early highlights were collaborations with Disney on *Elton John and Tim Rice's Aida* (US Tours, Taiwan, and China) and with Cameron Mackintosh on a new production of *Miss Saigon*. Also, the Tony®-Award winning Broadway revival of *42nd Street* and Susan Stroman's Broadway production of *Meredith Willson's The Music Man*. Others: *Footloose* (Las Vegas, US Tour), *Titanic*, *1776*, *Peter Pan*, *A Funny Thing Happened on the Way to the Forum* starring Rip Taylor, *Blast!*, *The Who's Tommy* (US Tour, South America, Europe, and Japan), *Ain't Misbehavin'* with Ruben Studdard, and the First National Tour of *Chitty Chitty Bang Bang*—flying car and all. More recent: *The Producers* (Susan Stroman's original work), *Hello, Dolly!* with Sally Struthers, *Guys and Dolls*, *My Fair Lady* (US Tour and China premiere), original hip-hop dance show *Groovaloo* (Off-Broadway), *Dr. Seuss' How the Grinch Stole Christmas! The Musical* (10 US Tours, Grand Ole Opry, and Madison Square Garden), *Dreamgirls* (US Tour, China premiere, Japan), *Hair* (US Tour and Japan), *Bring it On* (US Tour and Japan), and *Legally Blonde* (US Tours, China premiere, Singapore). More recently, *A Chorus Line* toured the US and Japan, and was seen in China for the first time. Post-pandemic, Big League remounted its acclaimed tour of *An American in Paris*, a new production of *South Pacific*, *Legally Blonde*, and continued touring its flagship production of *A Christmas Story The Musical*. Current work includes *The Cher Show* national tour and a new touring production of *Little Women*. Future work includes a new touring production of *The Addams Family*.

WHO'S WHO IN THE CAST

STAFF FOR *THE CHER SHOW* 2023-2024 NATIONAL TOUR

PRODUCER AND GENERAL MANAGER

Big League Productions, Inc.

President.....Daniel Sher
General Manager.....Zach Krohn
Associate General Manager.....Sophie Whitfield
Office Manager and
General Management Assistant.....Carson Lambert
Management Consultant.....Shawn Thibault
Management Consultant.....Brent Watkins
Travel Consultant.....Gina Willens
Booking Consultant.....L. Glenn Poppleton

Accounting....Neuschatz, Neuschatz, Herman & Hanke, LLP
Insurance.....Edgewood Partners Insurance Center
Banking.....JPMorgan Chase & Co.
Payroll.....Checks & Balances Payroll
Travel.....Road Rebel Global

TECHNICAL & CREATIVE STAFF

Company Manager.....Sophie Whitfield
Production Stage Manager.....Owen O'Brien
Production Supervisor.....Maya Davis
Associate Producer.....Shawn Thibault
Associate Director.....Saki Kawamura
Associate Choreographer.....Emilie Reiner
Associate Lighting Designer.....Jason Flamos
Associate Sound Designer.....Anthony Lopez
Technical Consultant.....Paul Gould
Lighting Consultant.....Martin Cox
Production Sound.....Thomas Ford
Keyboard Programmer.....Jim Harp
Assistant Stage Manager.....Kaitlin Buttufoco
Assistant Company Manager
and 2nd Assistant Stage Manager.....Lily Miller
Head Carpenter.....Rachel McCall
Assistant Carpenter/Flyman.....J. Ryan LoPresti
Head Electrician.....Kay Hawley
Assistant Electrician and Head Video.....Sam Kim
Assistant Electrician/Spot Op.....Ryan Anderson
Swing Electrician.....Dimitri Taylor
Head Sound.....Anthony Lopez
Assistant Sound.....Alec Group
Head Props.....Will Barrios
Head Wardrobe.....John Beltre
Star Dresser/Wardrobe.....Donna MacNaughton
Head Hair/Makeup.....Lisha Michel
Marketing Intern.....Owen Parker

TOUR BOOKING

Broadway & Beyond Theatricals

Tracey McFarland Ryan Bogner Victoria Lang
Jaymi Gilmour Megan Savage Kelsey Young
Monica Smith Gauri Mangala Mary Alex Daniels

BROADCAST ADVERTISING & MEDIA PRODUCTION

Fresh Produce Productions

Frank Basile

TOUR PRESS & MARKETING

TRUE Marketing

Wendy J. Connor Donna Fiegel

CREDITS

SCENERY PROVIDED BY DALLAS STAGE SCENERY,
IWEISS, MCGUIRE SCENIC, AND ROSE BRAND
LIGHTING PROVIDED BY INTELLIGENT LIGHTING SERVICES LTD
SOUND PROVIDED BY BIG LEAGUE PRODUCTIONS
TRUCKING PROVIDED BY JANCO
BUSING PROVIDED BY PEAK TOURING AND LAMOILLE VALLEY
HOTELS ARRANGED BY ROAD REBEL GLOBAL

THE CHER SHOW REHEARSED AT RIPLEY-GRIER STUDIOS
305 WEST 38TH STREET, NEW YORK NY

www.thechershowtour.com

@chershowontour



Backstage and Front of the House Employees
are represented by the International Alliance of
Theatrical Stage Employees (or I.A.T.S.E.).



The Director and Choreographer are members of
the **STAGE DIRECTORS AND CHOREOGRAPHERS
SOCIETY**, a national theatrical labor union.



United Scenic Artists • Local USA 829
of the I.A.T.S.E. represents
the Designers & Scenic Artists
for the American Theatre

MUSIC CREDITS

"Ain't Nobody's Business If I Do" Written
by Porter Grainger, Robert Graham Prince,
Clarence Williams, James Witherspoon. Used
with permission of Great Standards Music
Publishing Co. (ASCAP) and Universal Music
Corp. (ASCAP). "All I Ever Need Is You"
Written by Jimmy Holiday and Eddie Reeves.
Used with permission of EMI U Catalog Inc.
(ASCAP). "Bang Bang" Written by Sonny
Bono. Used with permission of Cotillion
Music Inc (BMI). "Be My Baby" Written by
Jeff Barry, Ellie Greenwich, Philip Spector.
Used with permission of Universal Songs of
Polygram (BMI), Mother Bertha Music (BMI),
Trio Music Company (BMI), ABKCO Music
Inc. (BMI). "Believe" Written by Paul Michael
Barry, Brian Thomas Higgins, Steven Torch.

Used with permission of WB Music Corp. (ASCAP), Hipgnosis Songs/Kobalt Music Publishing Ltd (PRS), PB Songs Ltd/Universal Polygram Int. Publishing Inc. (ASCAP), BMG Rights Management (UK) Limited (BMI). "Da Doo Ron Ron" Written by Jeffy Barry, Ellie Greenwich, Phillip Spector. Used with permission of Universal Songs of Polygram Intl. (BMI), Mother Bertha Music Inc. (BMI), ABKCO Music Inc. (BMI). "Half Breed" Written by Al Capps, Mary Dean. Used with permission of Blue Monday Music (BMI). "I Got You Babe" Written by Sonny Bono. Used with permission of Cotillion Music Inc. (BMI). "It Don't Come Easy" Written by Richard Starkey. Used with permission of BMG Platinum Songs (BMI) obo Startling Music Ltd. "I Like It Like That" Written by Christopher Kenner EMI Longitude Music (BMI). Used by permission of Sony/ATV Music Publishing. "If I Could Turn Back Time" Written by Diane Warren. Used with permission of RealSongs (ASCAP). "Little Man" Written by Sonny Bono. Used with permission of Cotillion Music Inc. (BMI). "Songs For The Lonely" Written by Paul Barry, Mark Taylor, Steve Torch. Used with permission of Metrophonic Music Ltd. (ASCAP)/Universal Music Publishing Ltd. (ASCAP), BMG Platinum Songs (BMI). "The Beat Goes On" Written by Sonny Bono. Used by permission of Warner Chappell. "The Shoop Shoop Song" Written by Rudy Clark. Used by permission of By The Bay Music (BMI)/Trio Music Company (BMI). "Vamp" Written by Walter Earl Brown. Used by permission of EBA Music (ASCAP). "You Better Sit Down Kids" Written by Sonny Bono. Used by permission of Cotillion Music Inc. (BMI). "You Haven't Seen The Last of Me" Written by Diane Warren. Used by permission of RealSongs (BMI). "A Different Kind of Love Song" Written by Johan Par Aberg, Michelle Robin Lewis, Sigurd Heimdal Roesnes. Used with permission of Wannabite Music (ASCAP)/ Universal Music MGB Songs (ASCAP). "A Dream Is A Wish Your Heart Makes" Written by Mack David, Al Hoffman, Jerry Livingston. Used with permission of Walt Disney Music Company (ASCAP). "Baby Don't Go" Written by Sonny Bono. Used with permission of Mother Bertha Music (BMI), Ten-East Music (BMI), Warner Chappell Music Publishing. "Dark Lady" Written by Johnny Durrill. Used with permission of Universal Music - MGB Songs (ASCAP). "Gypsies, Tramps and Thieves" Written by Bob Stone. Used with permission of Universal Music Careers (BMI). "Heart of Stone" Written by Andrew Gerard Hil, Peter John Sinfield. Used with

permission of BMG VM Music Ltd. (PRS). "I Found Someone" Written by Michael Bolton, Mark Mangold. Used with permission of But For Music Ltd./EMI April Music Inc. (ASCAP), Is Hot Music Ltd./EMI Blackwood Music Inc. (BMI). "Just Like Jesse James" Written by Desmond Child, Dianne Warren. Used with permission of Universal Polygram International Inc. (ASCAP), RealSongs (ASCAP). "Living In A House Divided" Written by Tom Bahler. Used by permission of Universal Music Careers (BMI). "Midnight Rider" Written by Greg Allman and Robert Payne. Used with permission of Unichappell Music Inc and Elijah Blue Music. "Rambling Man" Written by Richard Betts. Used with permission of Unichappell Music Inc. Forest Richard Betts Music (BMI). "Save Up All Your Tears" Written by Desmond Child, Dianne Warren. Used with permission of Universal Polygram International Inc. (ASCAP), RealSongs (ASCAP). "Strong Enough" Written by Paul Michael Barry, Market Phillip Taylor. Used with permission of PB Songs Ltd/Universal Music Publishing Ltd. (ASCAP). "Take Me Home" Written by Michele Aller, Bob Esty. Used with permission of Rick's Music Inc/ (BMI), Rightsong Music Inc. (BMI). "The Beat Goes On" Written by Sonny Bono. Used by permission of Cotillion Music Inc. (BMI). "The Way of Love" Written by Jaccques Dieval, Al Stillman, Mariano Ruiz. Used by permission of Chappell-Co. Inc. (ASCAP), Music Sales Corp. (ASCAP). "This Is A Woman's World" Written by Matt Morris, Paul Oakenfold, Anthony "TC" Crawford and Joshua "J.D." Walker. Used with Permission of BMG Blue, Mass Transit Music, Music of Big Deal. "When The Money's Gone" Written by Bruce Roberts, Donna Weiss. Used by permission of Reservoir Media Management, Donna Weiss Music, Inc. (BMI).

THE USE OF ANY RECORDING DEVICE, EITHER
AUDIO OR VIDEO, AND THE TAKING OF PHOTOGRAPHS,
EITHER WITH OR WITHOUT FLASH, IS
STRICTLY PROHIBITED.